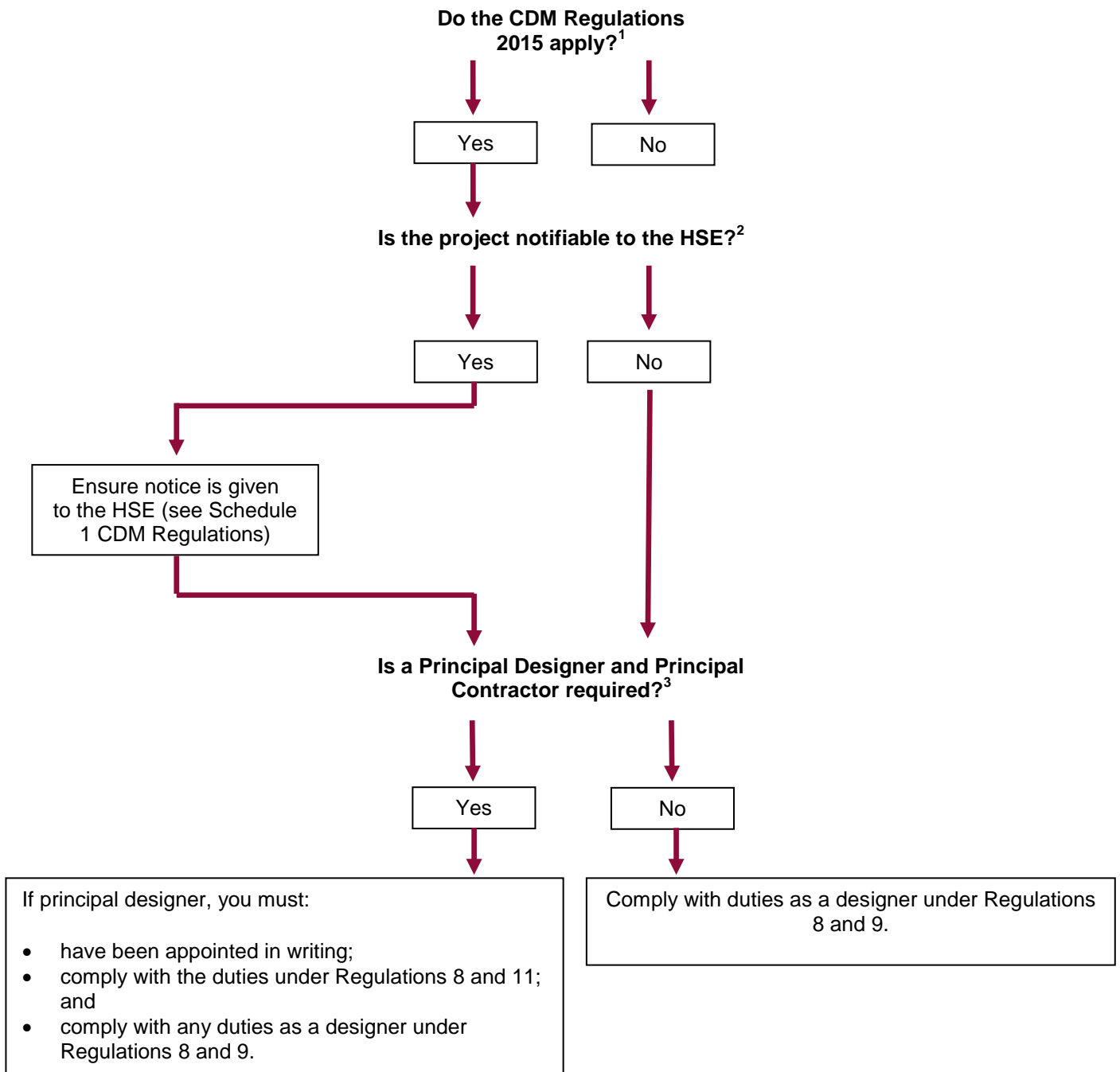




CDM Regulations 2015 – Flow Chart for Designers



If you have any queries in relation to this flowchart please contact Sheena Sood s.sood@beale-law.com or 020 7469 0402

25 February 2015

¹ The CDM Regulations 2015 apply to all construction projects in Great Britain (save for certain mining activities).

² The project is notifiable if the construction work is scheduled to:

- last longer than 30 working days and have more than 20 workers working simultaneously at any point in the project
- exceed 500 person days

³ A principal designer and principal contractor is required if more than one "contractor" (which includes sub-contractors) is used or will be used.